



CASE STUDY:

EROSION CONTROL

Manukau Golf Course Residential Development

MANUKAU, SOUTH AUCKLAND

MARCH 2018

CLIENT: FLETCHER RESIDENTIAL

CONTRACTOR: THE PLANT PEOPLE

BIOMAC C

Biomac C is a coir fibre erosion control blanket used for temporary soil erosion protection and to aid in the re-establishing of vegetation in landscaping applications.

Biomac C provides initial erosion protection to seed and young plants from the extremes of rain, wind and sun during the critical germination and development stage.

Biomac C is supplied in different grades for erosion protection and soil stabilisation projects. The choice of coir mat is dependent on the slope gradient, rainfall intensity and application.

As part of this new residential development an overland flow path, stormwater basin and wetland area had to be protected against erosion as part of the development's resource consents.

As the area is not subject to high velocity flows and the gradients are gentle the project team opted to create vegetated areas to help prevent erosion. However, to prevent loss of soils and help establish grasses and plants in this wetland flow path area Biomac C300 coir fibre matting was installed as an erosion protection mat.

Biomac C provides initial erosion protection to seed and young plants from the extremes of rain, wind and sun during the critical germination and development stage.

Rainwater runoff is considerably reduced with more water retained in the soil to further assist vegetation to germinate especially in dryer climates.

In addition, the natural decomposition of the coir (coconut fibres) provides some enhanced soil fertilisation.

This solution provide a number of advantages:

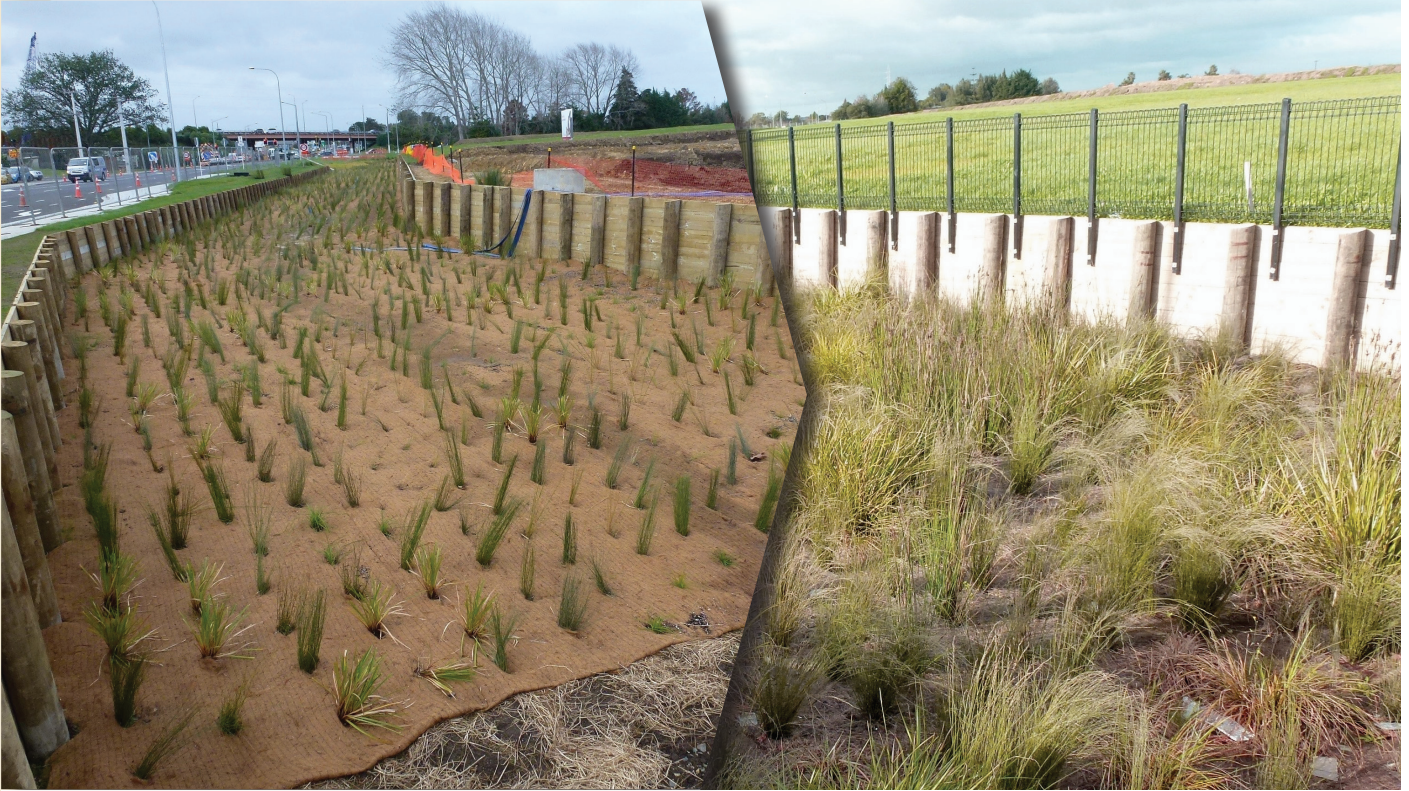
- » Seed protection against rain impact and wind
- » Moisture retention to soil
- » Soil and root insulation to temperature extremes
- » Natural material for environmental acceptance

A popular product used in landscaping applications Biomac C products are easily installed via ground pinning and provide a quick and cost-effective erosion control solution

Find your solution today

GEOFABRICS.CO

GEOFABRICS®
Smarter Infrastructure



Initial installation vs after vegetation established

Biomac C provides crucial protection young plants from the extremes of rain, wind and sun during the critical germination and development stage.



Established vegetation



Established vegetation