



INSTALLATION GUIDELINE

# Alidrain PVD

Prefabricated vertical drains



# Contents

<b>1. General</b>	<b>3</b>
<b>2. Product and application</b>	<b>3</b>
<b>3. Material identification, storage and handling</b>	<b>3</b>
<b>4. Preparation of working platform/horizontal drainage layer</b>	<b>4</b>
<b>5. Installation of Alidrain PVD</b>	<b>4</b>
<b>6. Jointing (splicing) of Alidrain PVD</b>	<b>5</b>
<b>7. Backfilling and compaction</b>	<b>5</b>

This information is provided for reference purposes only and is not intended as a warranty or guarantee. Solmax assumes no liability in connection with the use of this information. Please check the revision date and refer to our website for the latest updates.

# 1. GENERAL

This document is prepared to help ensure that the Alidrain® prefabricated vertical drain (PVD), once installed, will perform its intended design functions. To do so, the product must be identified, handled, stored and installed in such a way that its physical property values are not affected and the design conditions are ultimately met as intended. This document does not account for every possible construction scenario. This document contains information consistent with generally accepted practices of identifying, handling, storing and installing Alidrain PVDs for most consolidation acceleration applications. Failure to follow these guidelines may result in the unnecessary failure of the Alidrain PVD in an otherwise properly designed application.

# 2. PRODUCT AND APPLICATION



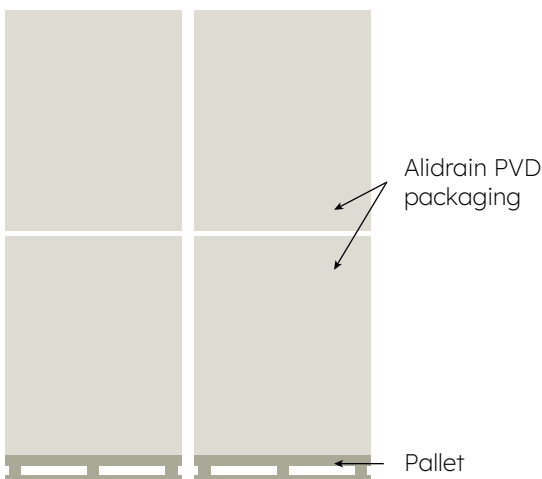
Alidrain PVD (see Figure 1) is comprised of a durable double sided ribbed polypropylene core wrapped around with a high-performance filter jacket. The filter jacket acts like a permeable membrane, enabling water to move through into the drain while retaining soil particles from entering and clogging the core. The product has an excellent flow discharge capacity even if it is kinked. It is usually installed in soft clays for more rapid excess pore water dissipation, thereby resulting in accelerated consolidation of soft clay layers and improved shear strength. Typical applications include accelerated consolidation in the construction of embankments for roads and railways and land reclamation projects.

Figure 1: Alidrain PVD

# 3. MATERIAL IDENTIFICATION, STORAGE AND HANDLING

The Alidrain PVD shall be rolled on cores having strength sufficient to avoid collapse or other damage from normal use. Every packaging which consists of 10 rolls of Alidrain PVD shall be wrapped with black plastic covering to protect the Alidrain PVD product from damage during shipping, handling and to prevent the product from direct exposure to ultraviolet light. Each packaging shall be identified with a durable gummed label or the equivalent, clearly legible on the outside of the packaging wrapping. The label shall indicate the manufacturer’s name, the style number and the roll number.

Upon delivery, check the packaging labels to verify that the correct product has been received. Inspect the Alidrain PVD packaging to ensure it is free of any flaws or damage that might have occurred during shipping or handling. While unloading, and transferring the packaging of Alidrain PVD from one location to another, care should be taken to prevent damage to the wrapping, core, label or the Alidrain PVD itself.



If the Alidrain PVD is to be stored for an extended period, the Alidrain PVD packaging shall be located and placed in a manner that ensures the integrity of the wrapping, core and label as well as the physical properties of the PVD product. This can be accomplished by elevating the Alidrain PVD packaging off the ground on pallets (see Figure 2). For safety purposes, the recommended maximum stacking is two packages per pallet.

Care should be taken to ensure that the Alidrain PVD packages are adequately covered and protected from UV radiation, chemicals that are strong acids or strong bases, fire or flames including welding sparks, temperatures more than 60 C, and human or animal destruction.

Figure 2: Recommended onsite storage of Alidrain PVD

## 4. PREPARATION OF WORKING PLATFORM/ HORIZONTAL DRAINAGE LAYER

The working platform is formed to support PVD installation equipment. Besides that, the working platform also acts as a horizontal drainage layer to remove water draining out of the top end of installed PVDs. Therefore, the working platform typically consists of granular materials. A stabilization geotextile is usually placed on the subgrade before the granular material are placed to protect the integrity of the granular material. Excavate and grade the ground surface, including trenches for ponding water to drain out of the construction site, as per the engineer's design and drawings. The excavated material should either be removed for disposal or stored at a significant distance from the sides of the trenches to prevent instability in the trench walls. Trim any large roots or sharp objects protruding out that might puncture or tear the stabilization geotextile and refill any voids created if necessary (see Figure 3).

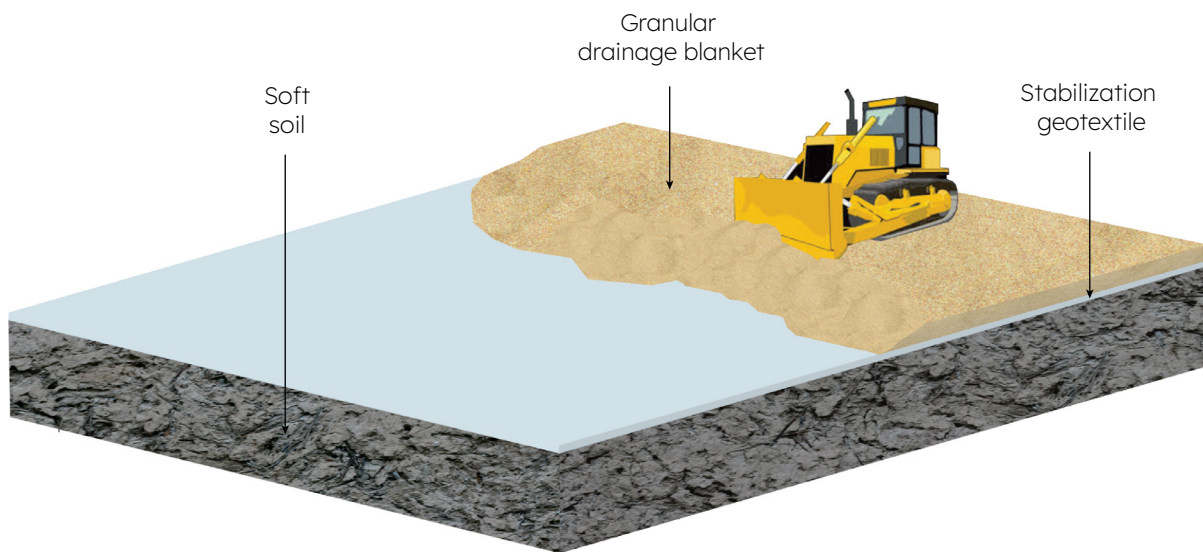


Figure 3: Construction of working platform/horizontal drainage layer

## 5. INSTALLATION OF ALIDRAIN PVD

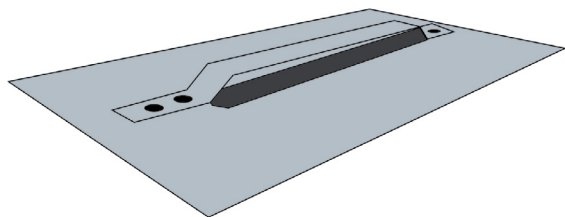


Figure 4: Alidrain PVD anchor plate

Alidrain PVDs are generally supplied in standard packaging of rolls with specific roll length and width. Before removing Alidrain PVD packaging wrapping, verify the packaging identification. While removing the Alidrain PVD packaging wrapping, inspect the product for damage or defects. Discard or repair any damage that occurs during storage, handling or installation as directed by the engineer.

Before installing the Alidrain PVDs, mark the alignment of individual PVD position with pegs. The installation grid has a triangular or square pattern spacing and which to use is decided as per the engineer's specification.

Mount the Alidrain PVD roll on the side of the leader and feed the Alidrain PVD through the tubular steel mandrel. At the base of the mandrel, the Alidrain PVD is looped through an anchor plate (PVD shoe) (see Figure 4) which will be installed together into the compressible soft soil at a constant speed (see Figure 5). The anchor plate holds and retains the installed Alidrain PVD in position at the required depth when the mandrel is extracted back up from the ground.

Retrieve the mandrel and install a new drain within 500 – 600 mm or as per engineer's specification from the original position if the mandrel hits an obstruction. Attempt two tries at most at installing the drain within the stated radius. If the drain still could not be installed, the drain location shall be abandoned and continue with the next drain location or as per the engineer's direction. Pre-auger method can also be used to loosen any obstruction before installing the drain.

The mandrel is withdrawn from the ground and the Alidrain PVD is cut off with approximately 300 mm or as per engineer's specification, left to protrude above the granular drainage blanket layer to complete the installation of single Alidrain PVD. Repeat all the steps for the whole installation process.

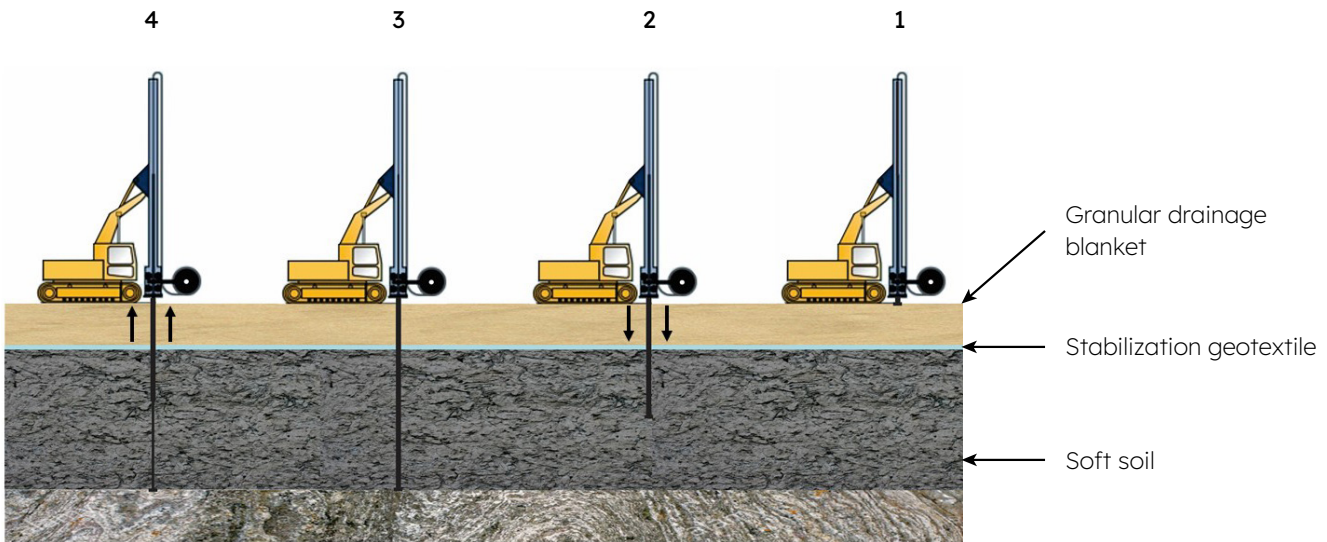
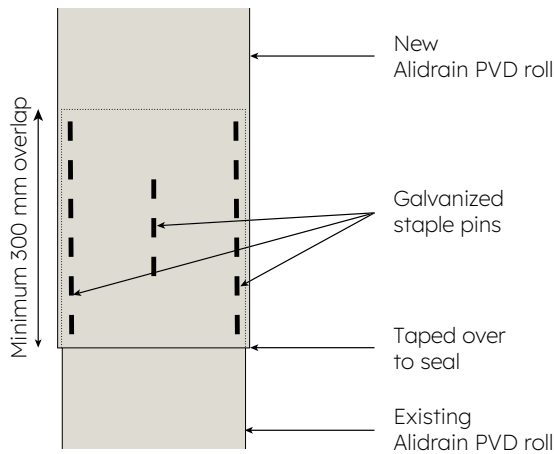


Figure 5: Installation of Alidrain PVD

## 6. JOINTING (SPLICING) OF ALIDRAIN PVD



Prepare the stapling plier and galvanized staplers. The size of the galvanized stapler is recommended to be a minimum of 12 mm. Pull the end of existing roll and new roll of Alidrain PVD close to each other. Insert the end of the existing roll into the new roll of Alidrain PVD. Ensure there is a minimum 300 mm Alidrain PVD (composite of core and filter jacket) overlapping length. Staple the Alidrain PVD splice by using the Stapling Plier. The method of splicing shall be carried out with 6 staples each on both left and right side of the overlapped Alidrain PVD. In addition, apply another 3 staples at the center of the overlapped Alidrain PVD (see Figure 6).

Figure 6: Recommended Alidrain PVD jointing (splicing) methodology

## 7. BACKFILLING AND COMPACTION

Top up the granular drainage blanket first after finishing the installation of Alidrain PVDs. Filter geotextile may be needed on top of granular drainage layer before general backfill is placed. Then, backfill with suitable material as per the engineer's specification. Place the suitable backfill material and compact at every 300 mm thickness or otherwise instructed by the engineer until the proposed platform level.

## About Solmax

Solmax is a world leader in sustainable construction solutions, for civil and environmental infrastructure. Its pioneering products separate, contain, filter, drain and reinforce essential applications in a more sustainable way – making the world a better place. The company was founded in 1981, and has grown through the acquisition of GSE, TenCate Geosynthetics and Propex. It is now the largest geosynthetics company in the world, empowered by more than 2,000 talented people. Solmax is headquartered in the province of Quebec, Canada, with subsidiaries and operations across the globe. To find out more, contact [infoasia@solmax.com](mailto:infoasia@solmax.com).

## Uncompromised quality

Our products are manufactured to strict international quality standards. All our products are tested and verified at our dedicated and comprehensive laboratories which maintain numerous accreditations. We offer our partners a wide scope of testing according to published standards to ensure products delivered to sites meet specified quality requirements.

# Let's build infrastructure better



Solmax is not a design or engineering professional and has not performed any such design services to determine if Solmax's goods comply with any project plans or specifications, or with the application or use of Solmax's goods to any particular system, project, purpose, installation, or specification.

Products mentioned are registered trademarks of Solmax in many countries around the world.

**SOLMAX.COM**